

# **Emergency Information**

Alabama Women's Basketball – Play Date

June 7<sup>th</sup>, 2018

Foster Auditorium  
801 6<sup>th</sup> Ave  
Tuscaloosa, AL 35401

Coleman Coliseum  
323 Paul W Bryant Dr.  
Tuscaloosa, AL 35401

## ❖ **Contact Information**

- If parents or guardians need to get in contact with staff they may call the numbers listed below:
  - Women's Basketball Main Office: 205-348-7077
  - Brian Johnson: 205-348-3834

## ❖ **Pick Up / Drop Off Locations**

- Foster Auditorium:
  - Campers will enter through the main entrance off of Malone Hood Plaza. Two drop off locations are available; one off of 6<sup>th</sup> Ave, and the second in the parking lot off of Hackberry Ln. Pick up will occur at the same locations. (See attached map for more information)
- Coleman Coliseum:
  - Campers will enter through the main front entrance off of Paul Bryant Dr. Parking is available in the front circle and also in the east lot. Pick up will occur at the same locations. (See attached map for more information)

## ❖ **Shelter Locations**

- Foster Auditorium:
  - During the event of severe weather campers will remain inside Foster Auditorium and seek shelter in the south end of the Auditorium. If Foster Auditorium needs to be evacuated campers will evacuate across the street to Moore Hall. (A.B. Moore Hall, Tuscaloosa AL 35401 – located off of 6<sup>th</sup> Ave)
- Coleman Coliseum:
  - During the event of severe weather campers will remain inside Coleman Coliseum and seek shelter in the concourse level of the Coliseum.

## Program Information

Program Name: ALABAMA WBB - PLAY DATE Start Date: JUNE 7, 2018

## Contact Information

### General Information

The following contact information may be used to obtain general information in non-emergency situations.

General Contact: BRYAN JOHNSON Phone: 205-348-3834

Web address: CURRYCAMPS.COM Email: bjohnson@ia.ua.edu

Compliance, Ethics, and Regulatory Affairs \_\_\_\_\_ (205) 348-2334  
[youthprotection@fa.ua.edu](mailto:youthprotection@fa.ua.edu)

### Emergencies

In the event of an emergency, the following individuals may be contacted for information. Please note that these contacts might not be the same as those used for general information.

Primary Contact: BRYAN JOHNSON Phone: 205-348-3834

Alternate Contact: VICKY PLANT Phone: 205-348-7077

If the designated emergency contacts cannot be reached, please contact UAPD for on-campus emergencies or local law enforcement for off-campus emergencies.

University Police (UAPD) \_\_\_\_\_ (205) 348-5454 or 911

### Shelter Locations

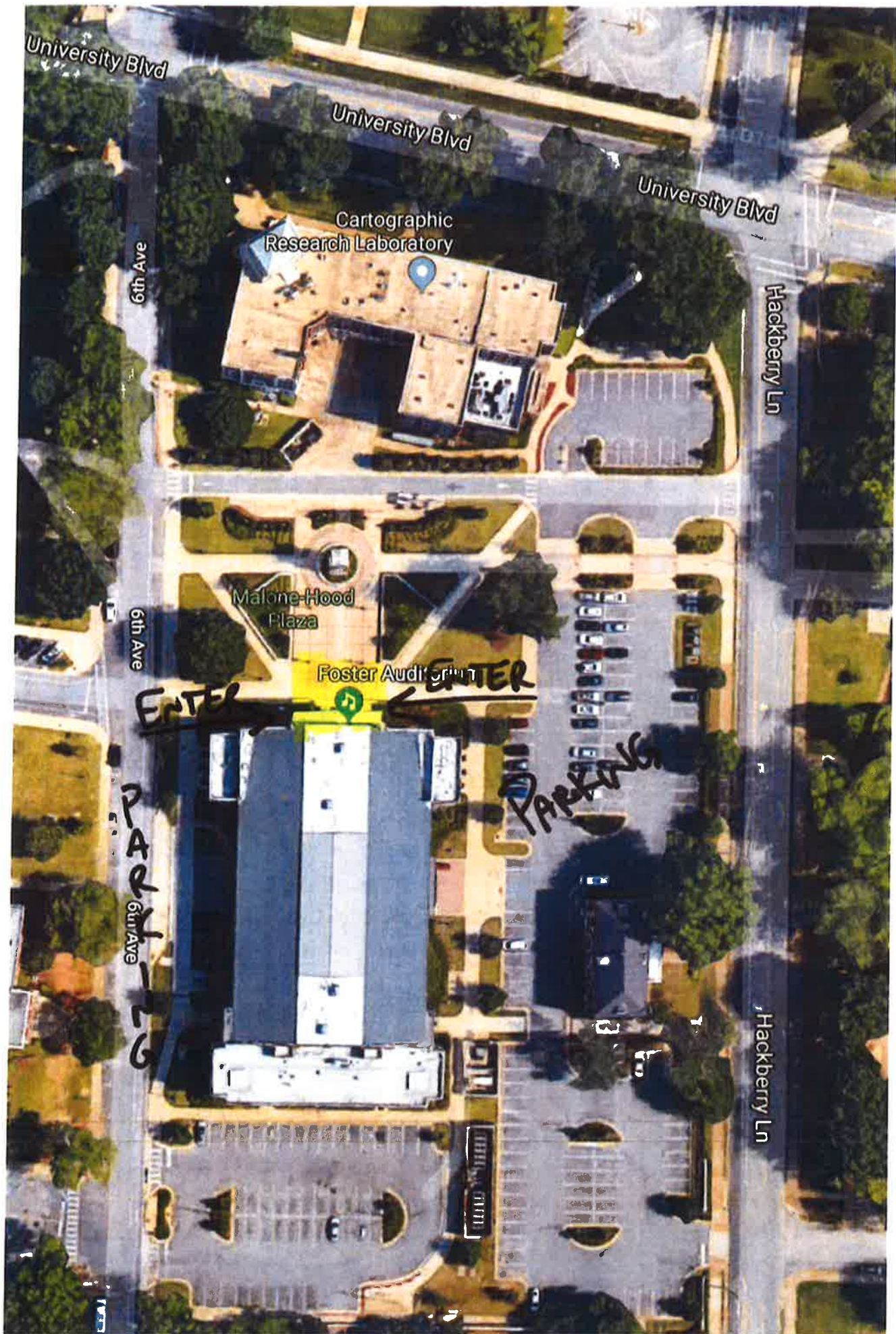
If emergency conditions necessitate evacuation of the planned program location, participants will be moved to the following shelter location(s).

Primary Shelter: FUSTER → BATHROOMS OR MOORE HALL

Alternate Shelter: COLEMAN → CONCOURSE LEVEL

For emergencies:  
Call UAPD: (205)348-5454  
Off Campus: Dial 911





University Blvd

University Blvd

University Blvd

6th Ave

Cartographic  
Research Laboratory

Hackberry Ln

6th Ave

Malone-Hood  
Plaza

Foster Auditorium

ENTER

ENTER

PARKING

NORTH  
6th Ave

Hackberry Ln